



Kyowa Interface Science Co., Ltd.
5-4-41 Nobitome, Niiza-City, Saitama 352-0011, Japan
Tel.+81-48-483-2629 Fax.+81-48-483-2702

April 20, 2016

Notice about Windows 10 upgrade

Thank you for choosing Kyowa's instruments.

Recently we noticed the facts that Windows 7 and Windows 8.1 of Microsoft are scheduled to update to Windows 10 automatically.

The software of our instruments is not programmed to be compatible with Windows 10 as of April, 2016.

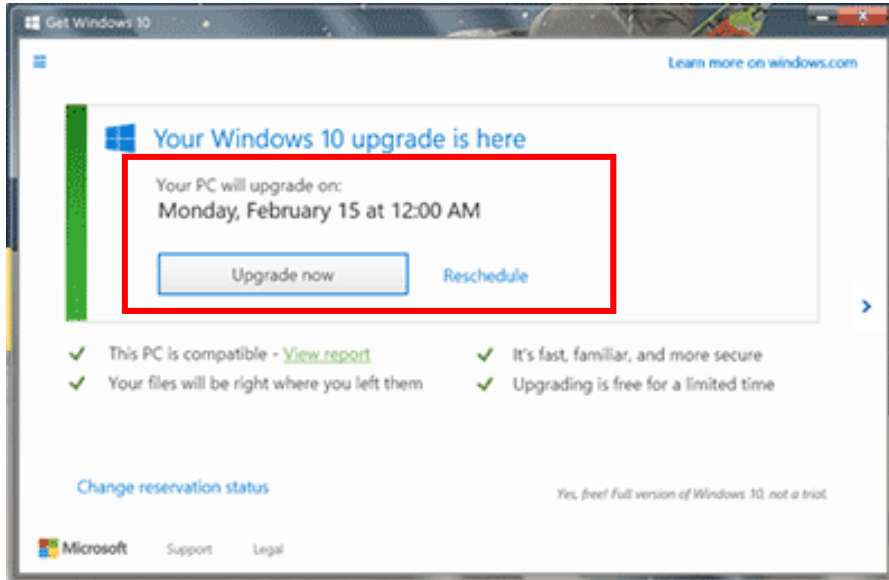
Please do not try to upgrade to Windows 10 as for the computers with our software installed.

If Windows10 has been automatically installed to your computer, please go back to the versions that you have been using in referring to the following instruction.

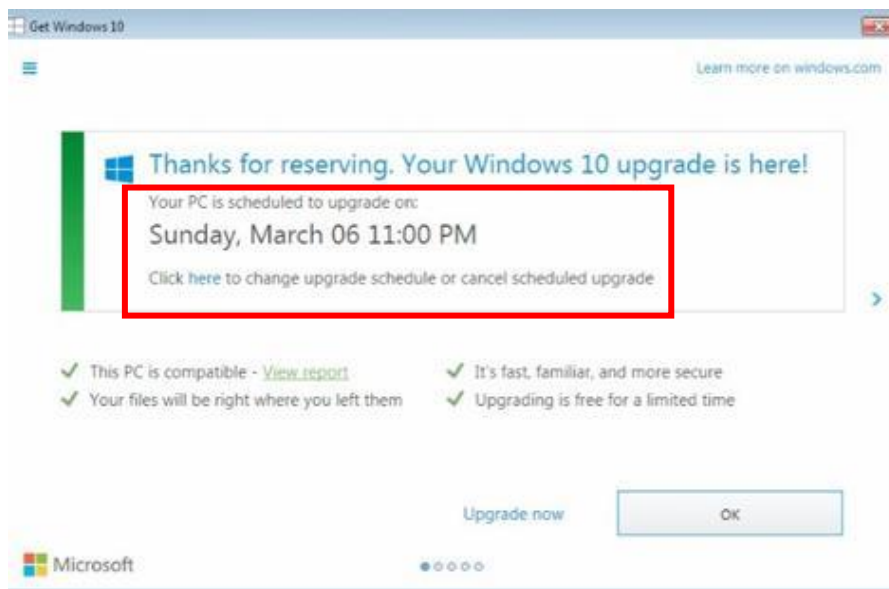
Thank you for your cooperation and understanding.

<How to cancel the upgrade to Windows 10>

1. If the schedule of Upgrade is shown on the screen as below, please choose “Reschedule”.



2. Then click” here” to change upgrade or cancel scheduled upgrade.

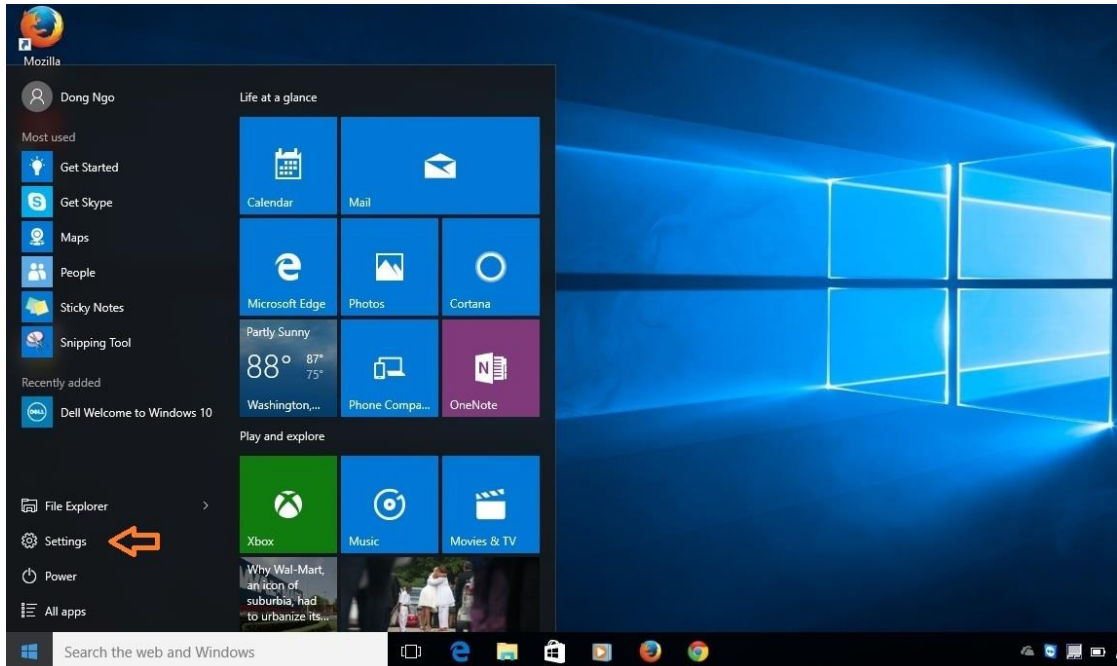


3. Again click “cancel scheduled upgrade”

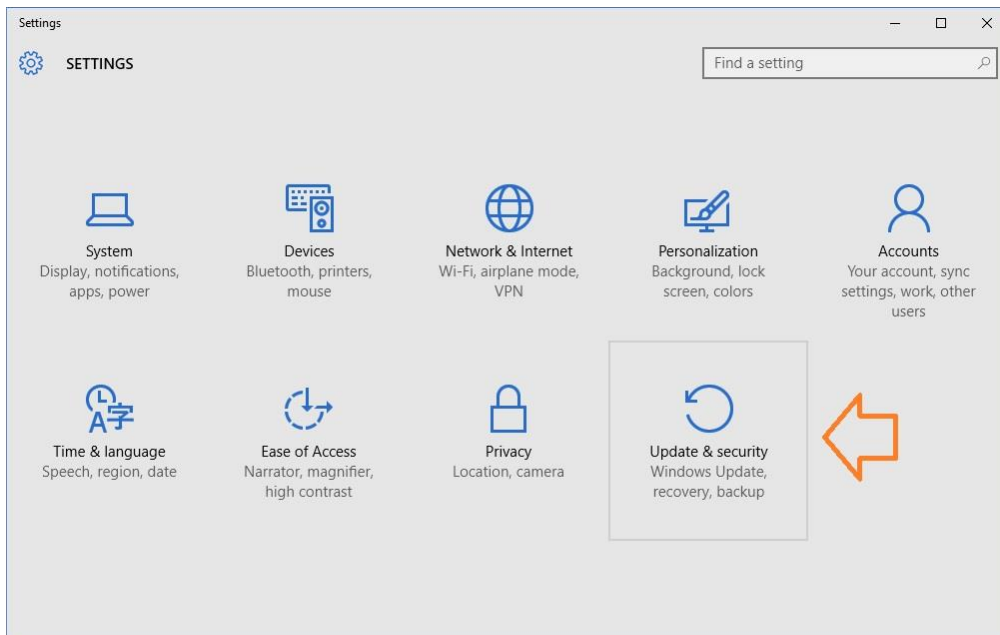
<How to go back to the previous version from Windows10>

e.g. Back to Windows 7

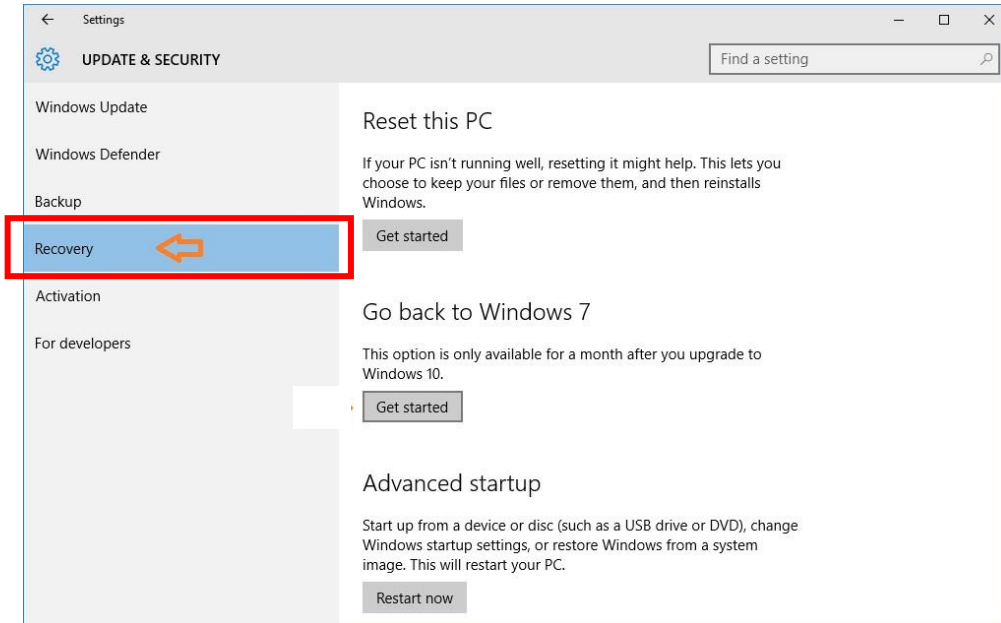
1. Click “Setups” in stating menu.



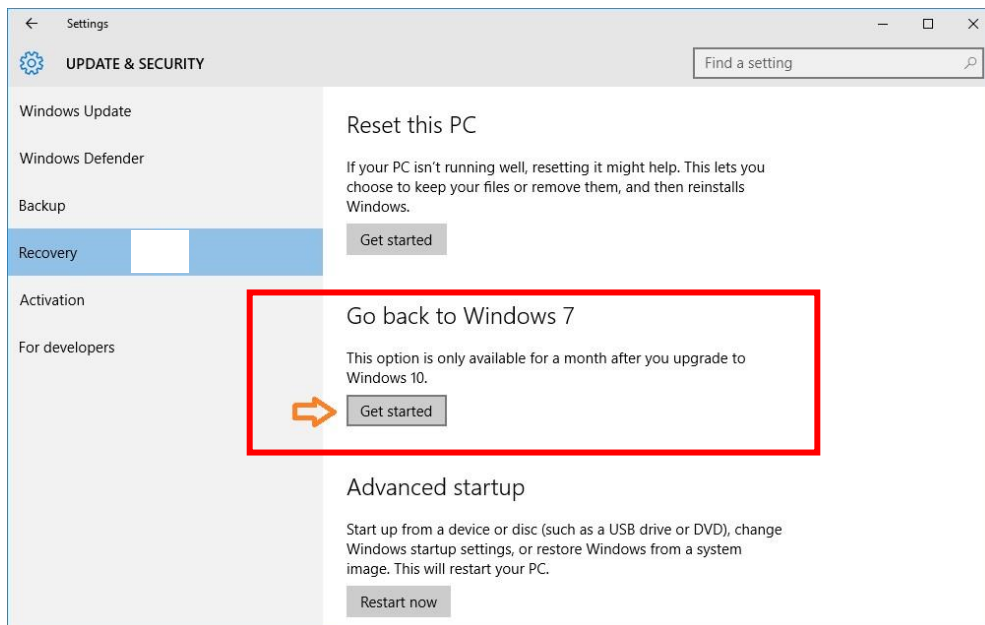
2. Click “Update & security” in Settings.



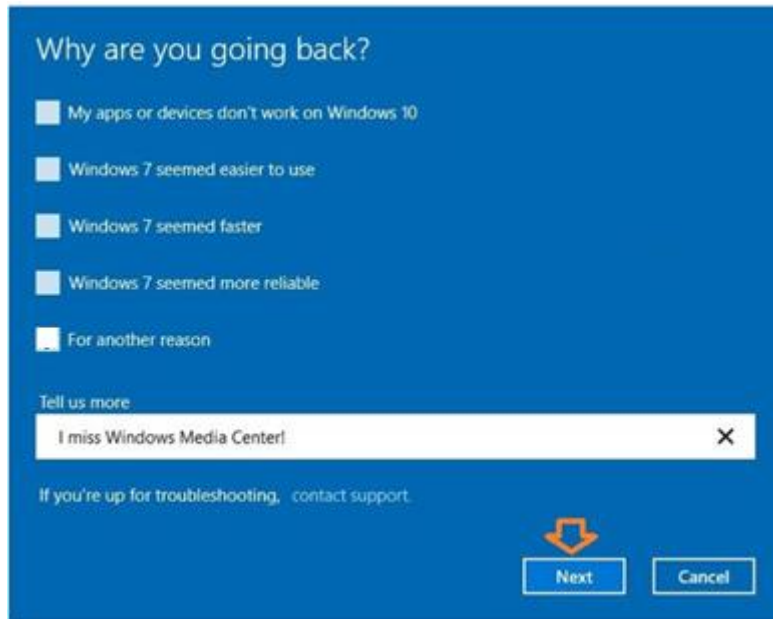
3. Click “Recovery”



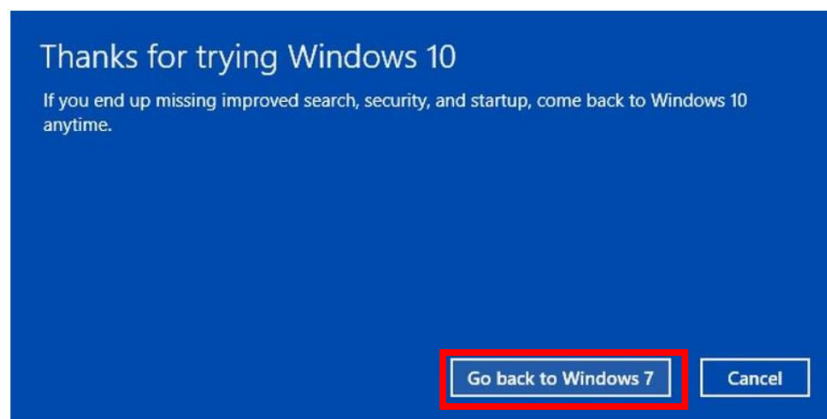
4. Click “Get started” under “Go back to Windows 7”



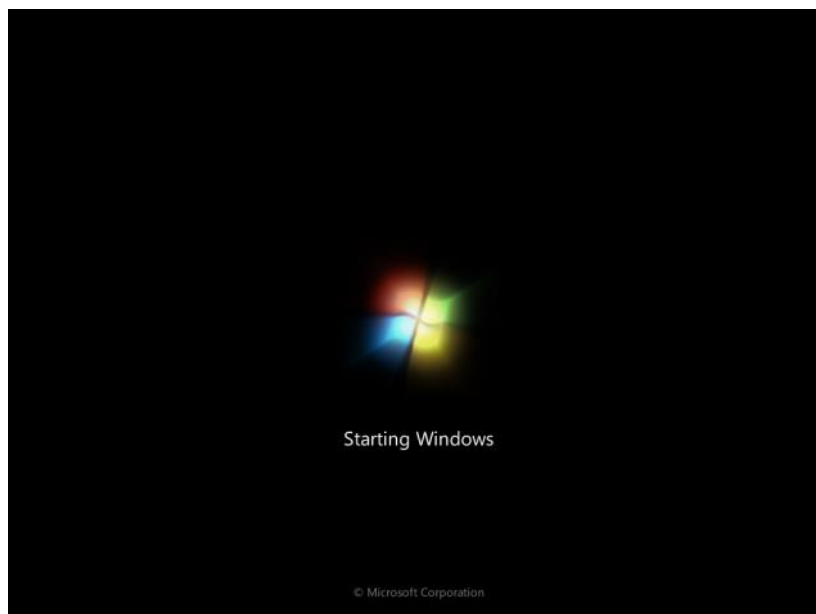
5. Choose the reason why you are going back.



6. Click "Go back to Windows 7"



Then PC reboots and starts restoration of Windows 7.



Finishing the steps to go back to Windows 7.

